



Low energy whole house heat recovery unit with a high-efficiency heat exchanger (up to 88%) to provide a constant supply of fresh tempered air into the living spaces.

The incorporated intelligent humidity tracking control as standard, constantly monitor the humidity level, meaning no user intervention required.

As humidity rises and falls, the motor speed adjusts in direct correlation. This controls condensation quietly and efficiently, reducing the periods of time when the system operates on maximum speed, saving energy.

Our constant flow technology delivers the required airflow at all times.

The ultra compact design allows installation of the unit vertically on the wall (with concealed pipework) or horizontally in a false ceiling.

Altair is equipped with high efficiency G4 filters for supply and extract.

The control switch included, allows the user to select the working mode of the unit (manual or automatic) and indicates when the filter needs replacing.

**Features**

- Counter-flow heat exchanger with up to 88% thermal efficiency.
- Low-consumption EC motor.
- Centrifugal forward curved impeller.
- EPP body.
- 4 nozzles Ø100 mm.
- G4 inlet filter.
- G4 extract filter.



LOW PROFILE

**Specific applications**



Single dwellings



Multi dwelling blocks



Heat recovery unit



**Remote control included in the product**

Allows regulation of:

- Speed.
- Manual or automatic mode.
- Filters alarm.



**Ultra compact design:**

Installation of the unit vertically on the wall (with concealed pipework) or horizontally in a false ceiling. Possibility of installation in the kitchen cabinet.



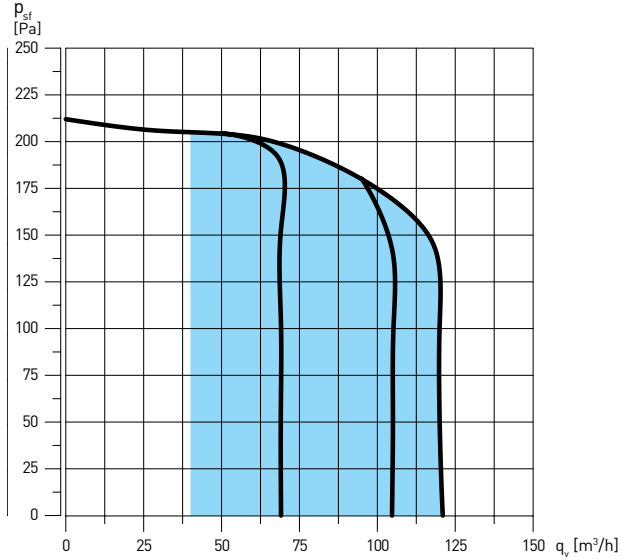
**Mounting flexibility**

Possibility of changing the outlet nozzle 90 °.

## TECHNICAL CHARACTERISTICS

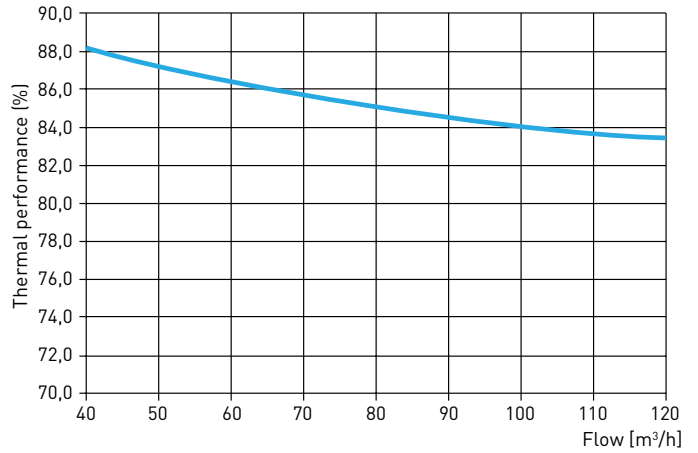
Model	Efficiency (%)	Voltage (V)	Maximum airflow at 100 Pa (m <sup>3</sup> /h)	Sound pressure level at 1,5 m (120 m <sup>3</sup> /h - 100 Pa)	Absorbed power (W)
ALTAIR 120	88	230	120	38	53

## PERFORMANCE CURVES



Curves defined considering clean filters.

## EFFICIENCY CURVE

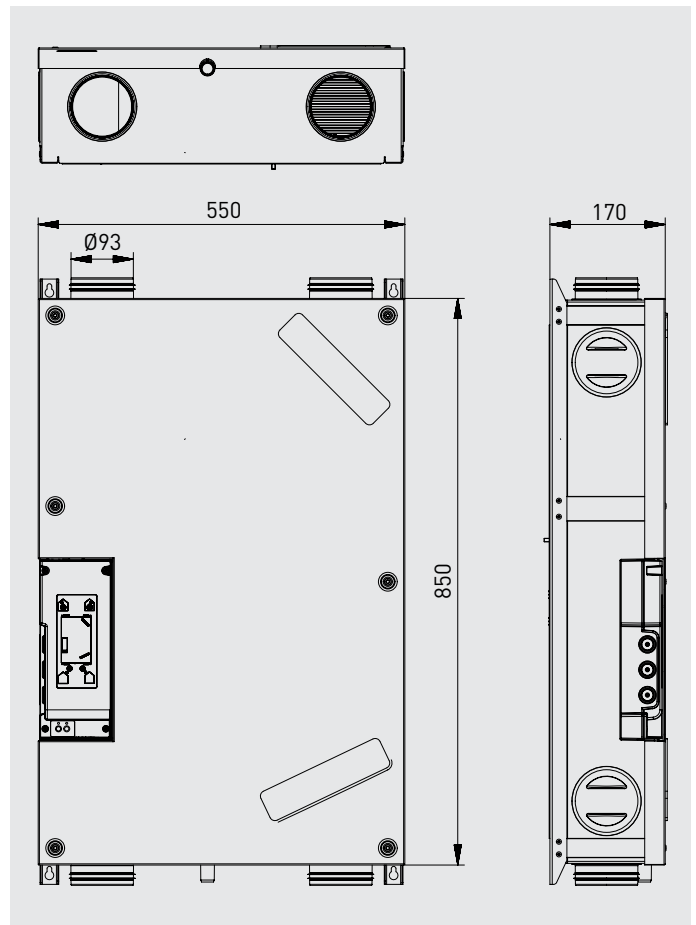


Performance obtained according to UNE 13141-7 (Text 20°C and Tint 7°C).

## CONSUMPTION TABLE - Pabs (W)

		q <sub>v</sub> (m <sup>3</sup> /h)		
		70	105	120
P <sub>sf</sub> (Pa)	150	40	49	53
	100	31	37	47
	50	12	17	23

## DIMENSIONS (mm)



**MOUNTING ACCESSORIES**



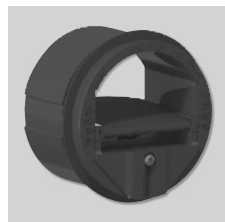
**KIT G4/G4 ALTAIR**  
 Pack G4  
 spare filters.



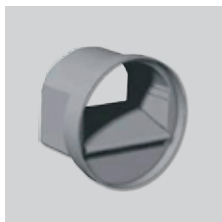
**BARJ  
 BARP**  
 Self-adjusting  
 calibrated extraction  
 valves.



**BDOP**  
 Supply and  
 extraction valve.



**RDR**  
 Self-adjusting  
 damper (50-250 Pa)  
 that, fitted inside  
 the duct, maintains  
 constant airflow.



**RD BP**  
 Specific low-pressure  
 (20-100 Pa) and  
 self-adjusting  
 damper with sleeve  
 to fit directly into the  
 duct.  
 80mm diameter.  
 Airflow: 15 or 30 m<sup>3</sup>/h.



**RD BP SM**  
 Specific low-pressure  
 (20-100 Pa) and  
 self-adjusting damper  
 without sleeve to fit  
 directly into the sleeve  
 of the BDOP.  
 80mm diameter.  
 Airflow: 15 or 30 m<sup>3</sup>/h.



**CT**  
 Roof cowl.



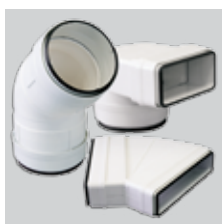
**ADRF 100/80**  
 Reduction to  
 connect rigid duct to  
 spigots for flexible  
 ducts.



**GPR-ISO**  
 Insulated rigid duct.



**GP  
 GPX  
 GP-PRO  
 GP-ISO**  
 Insulated PVC  
 ducts.



**TUBPLA V  
 TUBPLA**  
 Self-extinguishing  
 rectangular plastic  
 ducts.  
 TUBPLA V series with  
 gasket.



**LAF 95**  
 Sound attenuators  
 (0,5 and 1 meters  
 models).